

Himec 9915 BA

Himec 9915 BA is designed for mechanized lifting and installing of roof supports and net. Platform lifting capacity is 1500 kg/8,9 m. Arclift 12 manipulator is capable to install roof supports of max 1200 kg weight up to 11 m working height. SCREENKIT helps in installing of net.



normet
Your partner for tough jobs



normet



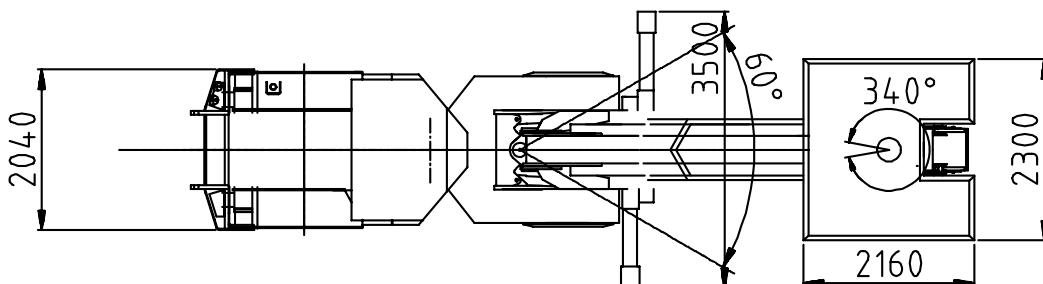
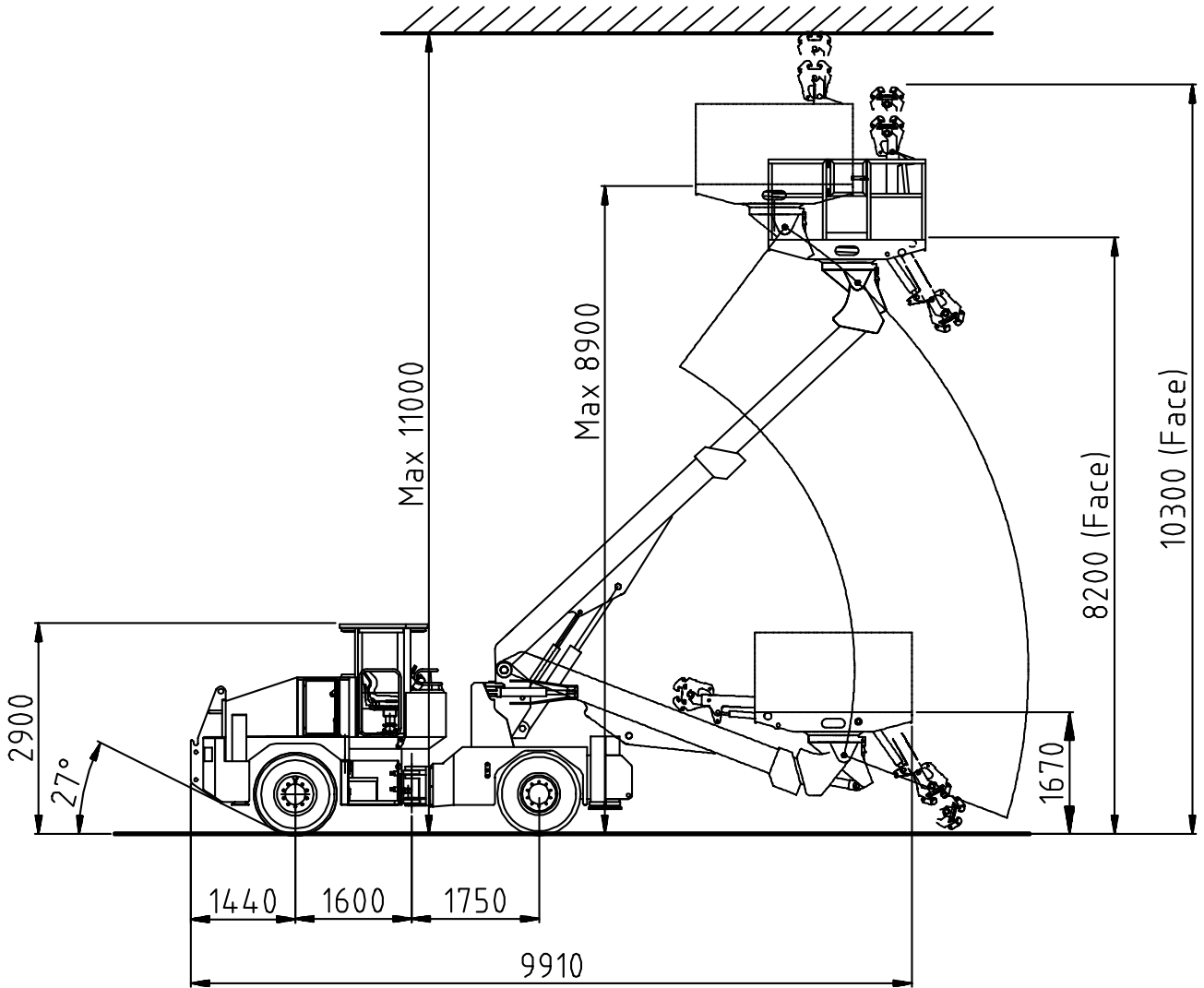
Normet Corporation

Ahmolantie 6
FIN-74510 PELTOSALMI
FINLAND
Tel +358 (0)17 83 241
Fax +358 (0)17 823 606

Himec 9915 BA

Single boom roof support lifter

TI 1700106
DRW
DATE 08.03.1999
PAGE 1 / 4
APPR.



normet



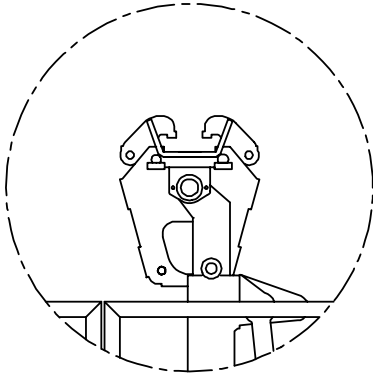
Normet Corporation

Ahmolantie 6
FIN-74510 PELTOSALMI
FINLAND
Tel +358 (0)17 83 241
Fax +358 (0)17 823 606

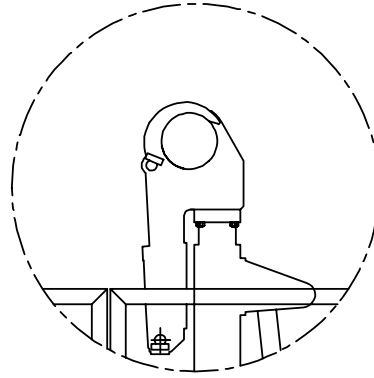
Himec 9915 BA

Single boom roof support lifter

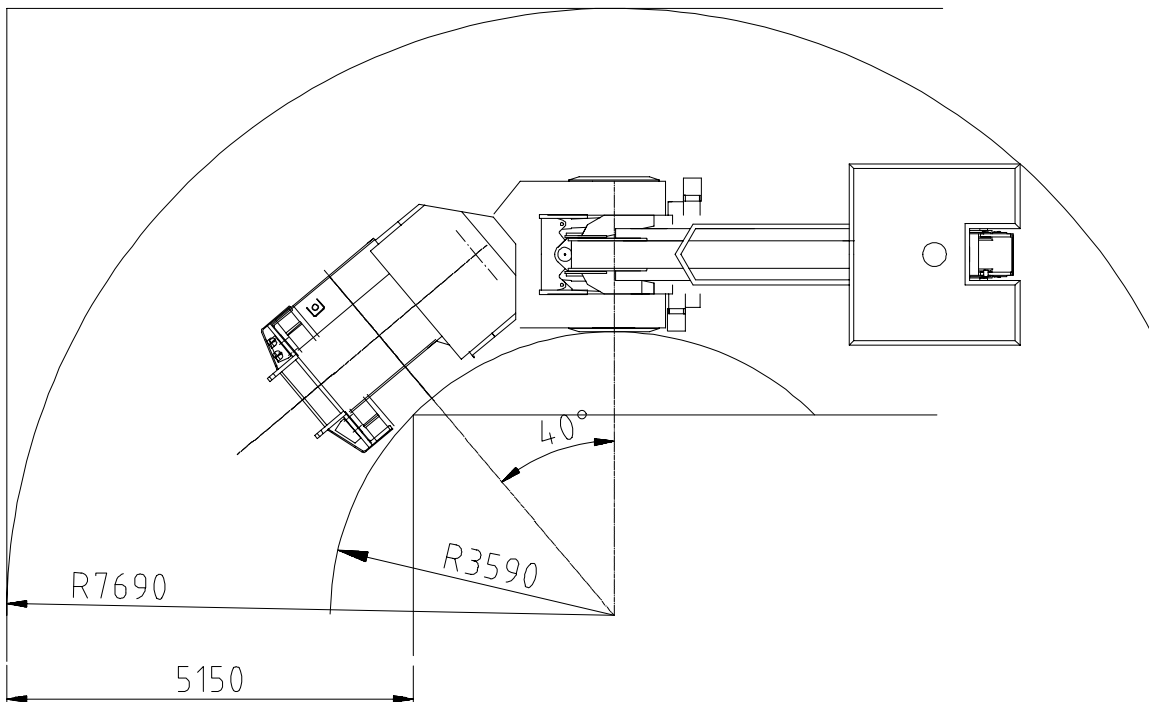
TI 1700106
DRW
DATE 08.03.1999
PAGE 2 / 4
APPR.



GRAPPLE F



GRAPPLE D



normet



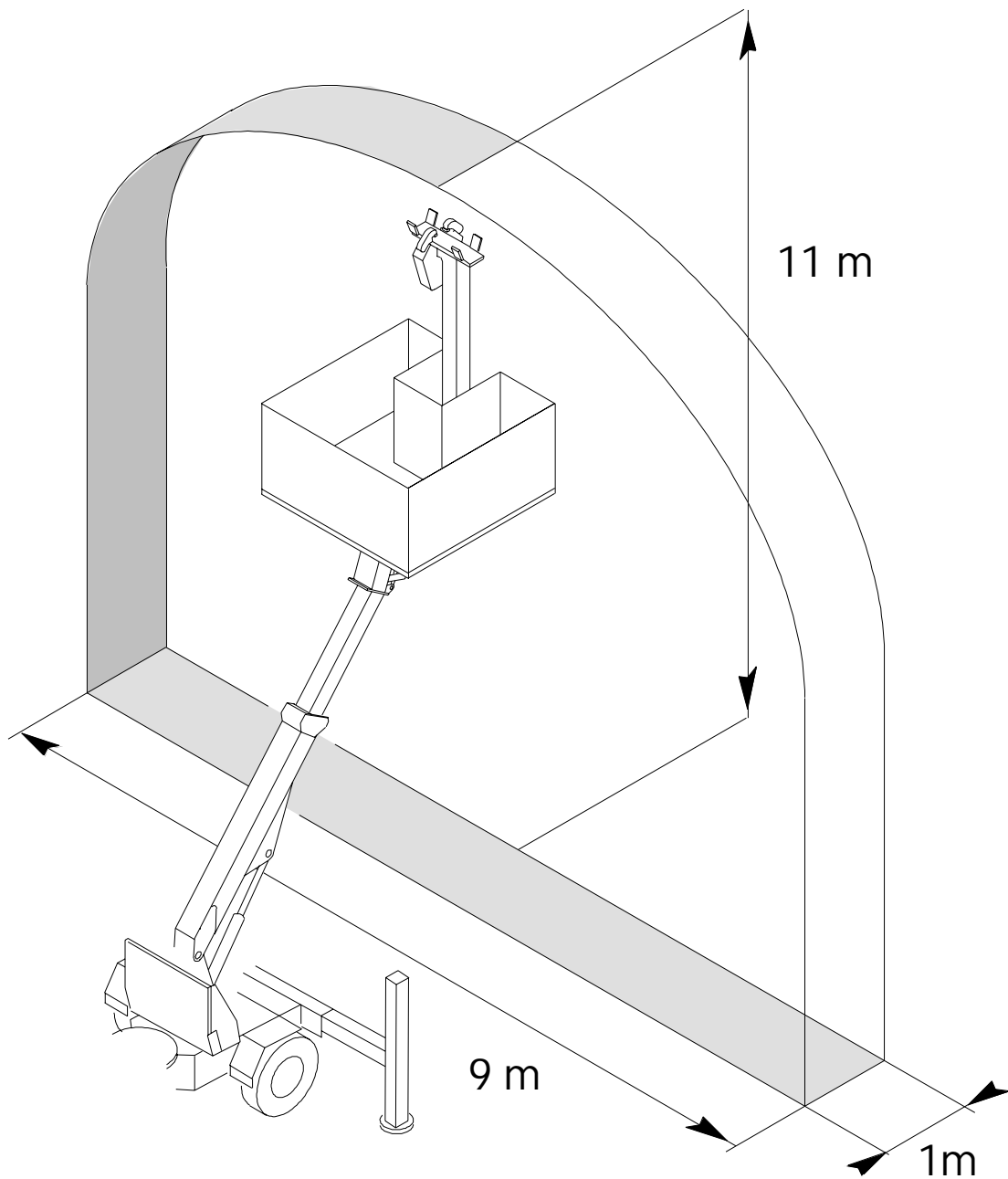
Normet Corporation


Ahmolantie 6
FIN-74510 PELTOSALMI
FINLAND
Tel +358 (0)17 83 241
Fax +358 (0)17 823 606

Himec 9915 BA

Single boom roof support lifter

TI 1700106
DRW
DATE 08.03.1999
PAGE 3 / 4
APPR.



 Normet Corporation Ahmolantie 6 FIN-74510 PELTOSALMI FINLAND Tel +358 (0)17 83 241 Fax +358 (0)17 823 606	<h1>Himec 9915 BA</h1>	TI 1700106 DRW DATE 08.03.1999 PAGE 4 / 4 APPR.
	Single boom roof support lifter	

HIMEC 9915 BA

is a self propelled diesel driven 1-boom lifter for man lifting and robotic steel support installing in tunnels.

DIMENSIONS

Length	9910 mm
Width	2300 mm
Height	2900 mm
Wheel base	3350 mm
Ground clearance	380 mm
Outer turning radius	8050 mm
Inner turning radius	3590 mm
Weight, operating	19100 kg

1. NORMET SUPERBOOM NSB 900

is a heavy duty multipurpose boom suitable for charging, scaling, spraying of concrete, bolting and installing works. Different work platforms and net & roof support installing equipment are available. Boom is controlled from the platform and from the carrier.

Boom lift	- 20° ... + 53°
Boom slew	+/- 30°
Telescope	2400 mm

2. BA 15 PLATFORM

is specially designed for mechanized installation of steel supports. Platform is equipped with full rotation and automatic levelling system.

Working area	2,16 m x 2,30 m
Lifting capacity	1500 kg
Max. platform height	8,9 m
Vertical working reach, max.	11,0 m
Vertical working reach (FACE)	10,3 m

3. ARCHLIFT

Telescopic manipulator for mechanized, lifting and installing of steel support.

Max. load	1200 kg.
Max. lifting reach	11,1 m

4. SUPPORT LEGS

One pair in front and one pair at rear, hydraulically operated, front pair with lateral extensions.

5. WORKING LIGHTS

on the work platform	2 x 70 W
on the carrier	2 x 70 W

6. SAFETY CANOPY

over the drivers seat fulfills the European safety regulations.

7. CARRIER NC 98

is specially designed for underground use. Diesel engine with hydrodynamic transmission and 4-wheel drive gives max. tractive effort of 85 kN and max. speed of 25 km/h. Fully enclosed multidisc 2-circuit brakes and parking and emergency brake make operating reliable and safe in the harsh underground conditions.

Diesel engine	81 kW
Max. tractive effort	85 kN
PERFORMANCE	max.25 km/h

OPTIONS:

- * rear flap
- * Electrically or hydraulically driven compressor
- * PPE 150 G - electrically driven hydraulic power pack
- * HGEN60 - hydraulically operated generating set
- * Manually or hydraulically driven cable reel with cable
- * Screen kit - kit for net installing
- * HD - power train
- * Driver's cabin
- * ANFO Charging Equipment



normet



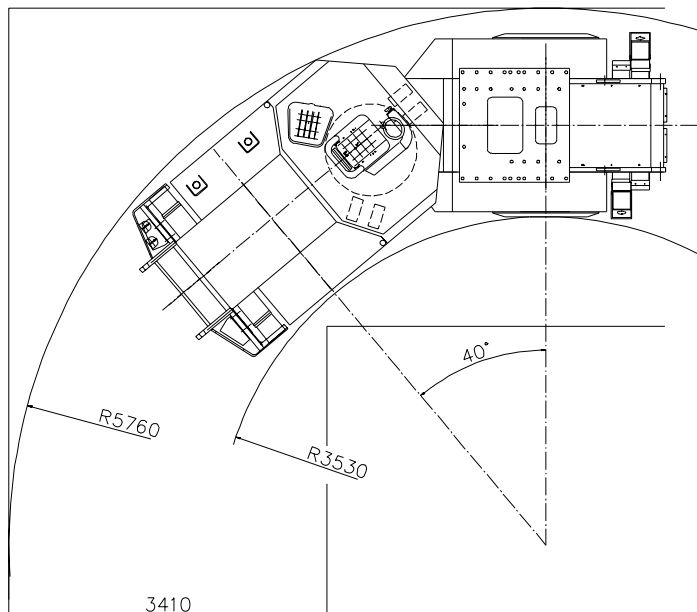
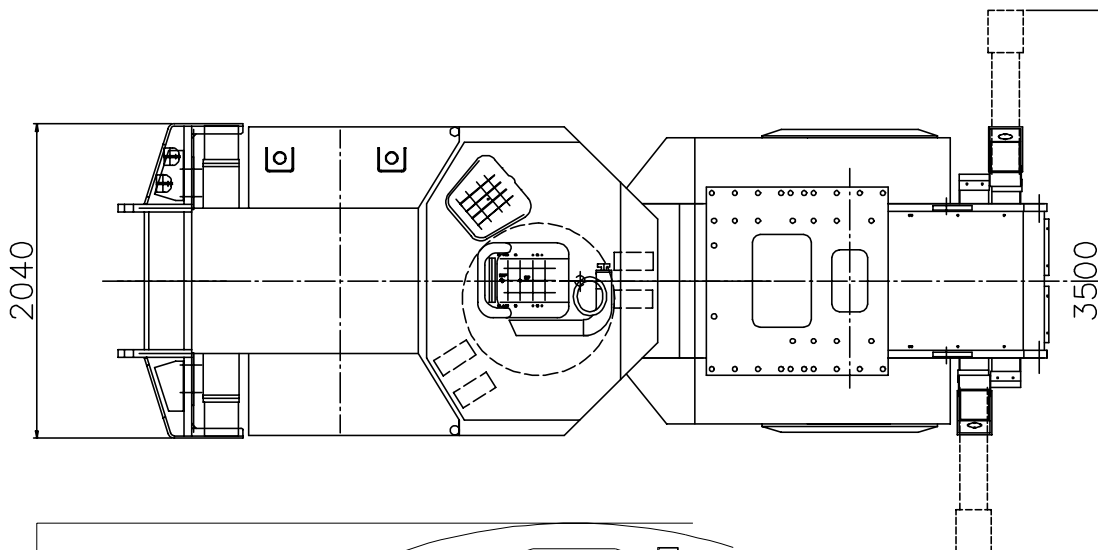
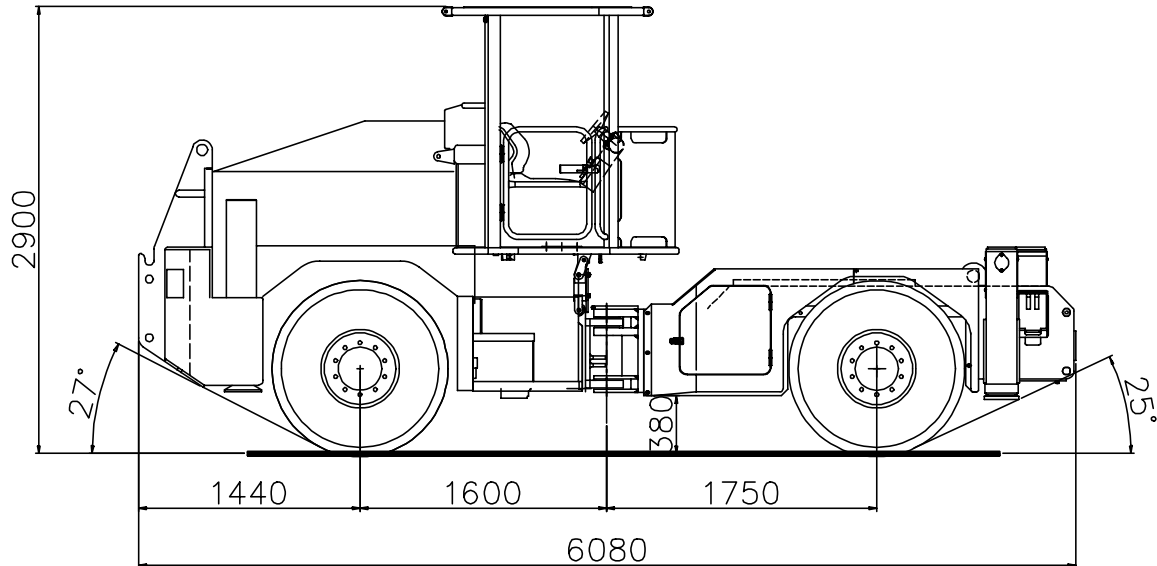
Normet Corporation

Ahmolantie 6
FIN-74510 PELTOSALMI
FINLAND
Tel +358 (0)17 83 241
Fax +358 (0)17 823 606

Carrier NC 98

Carrier

TI 1700380
DRW 1700307
DATE 07.11.2002
PAGE 1 / 2
APPR. 16.03.2004



normet**Normet Corporation**Ahmolantie 6
FIN-74510 PELTOSALMI
FINLAND
Tel +358 (0)17 83 241
Fax +358 (0)17 823 606

Carrier NC 98

Carrier

TI 1700380
DRW 1700307
DATE 07.11.2002
PAGE 2 / 2
APPR. 16.03.2004**CARRIER NC 98**

is a self-propelled centre-articulated 100 % bi-directional vehicle for underground use, powered by diesel engine and equipped with powershift transmission.

NC 98 is designed for hard work, its 4-wheel drive with powerful powershift gearbox and heavy duty planetary axles ensure good manoeuvrability even in most difficult conditions. Multi-disc two-circuit brakes and fail-safe type emergency and parking brake ensure safe and reliable operation in all situations.

The drivers compartment with pivoting seat and double pedals is the genuine invention of Normet. It enables good visibility and ergonomically correct position for the driver when driving forward or reversing the vehicle. It is fully protected against falling objects by means of an approved FOPS safety canopy or a fully enclosed ergonomic cab.

The compact design of the carrier is an undisputable benefit when driving through small tunnel sections or parking the unit in the neighbourhood of the worksite.

OPTIONS:**Heavy duty powerline with:**

DEUTZ BF4M 1013C, power 112 kW at 2300 rpm.

CAB drivers cabin with noise proofing and air conditioning.
Noise level max. 85 dBA

EPF exhaust soot particle filter

DIMENSIONS:Length 6080 mm
Width 2040 mm
Height 2900 mm
Wheel base 3350 mm
Ground clearance 380 mm
Track 1650 mm
Weight:
Operating 8500 kg
Max. payload 14000 kg**Engine:**Deutz BF4M 1012C
88 kW/2500 rpm**Transmission:** Dana Spicer powershift
3 speeds forwards
3 speed reverse**Axles:** Planetary type.Front axles fixed, engine end axle
oscillation $\pm 10^\circ$ **Tyres:** 12.00 - 20 PR18**Brakes:** Service/Safety/Parking brake:
(fail safe -type brake)
Hydraulically released oil immersed
multidisk brakes in both axles**Steering:** Hydraulic frame steering,
Orbitrol typeFrame articulation $\pm 40^\circ$ **Hydraulics:**

175 bar, 95 l/ 2200 rpm

Electrical system:24 V negative ground,
Battery 2 x 105 Ah
Alternator 80 A